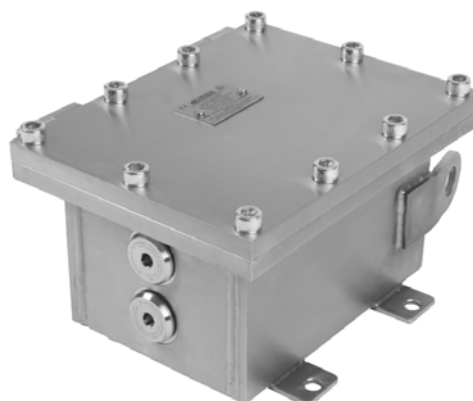


Nautilus Submersible Enclosure

The Nautilus is a terminal enclosure that combines Ex e hazardous area certification with an unparalleled level of ingress protection. Primarily designed for submersible applications. The Nautilus is certified IP68 at 100 metres for five days to EN60529.

Manufactured from 316 Stainless Steel to provide the maximum level of environmental protection under harsh conditions, the Nautilus is suitable for use in Zone 1 hazardous areas.



IP68



Product Specification

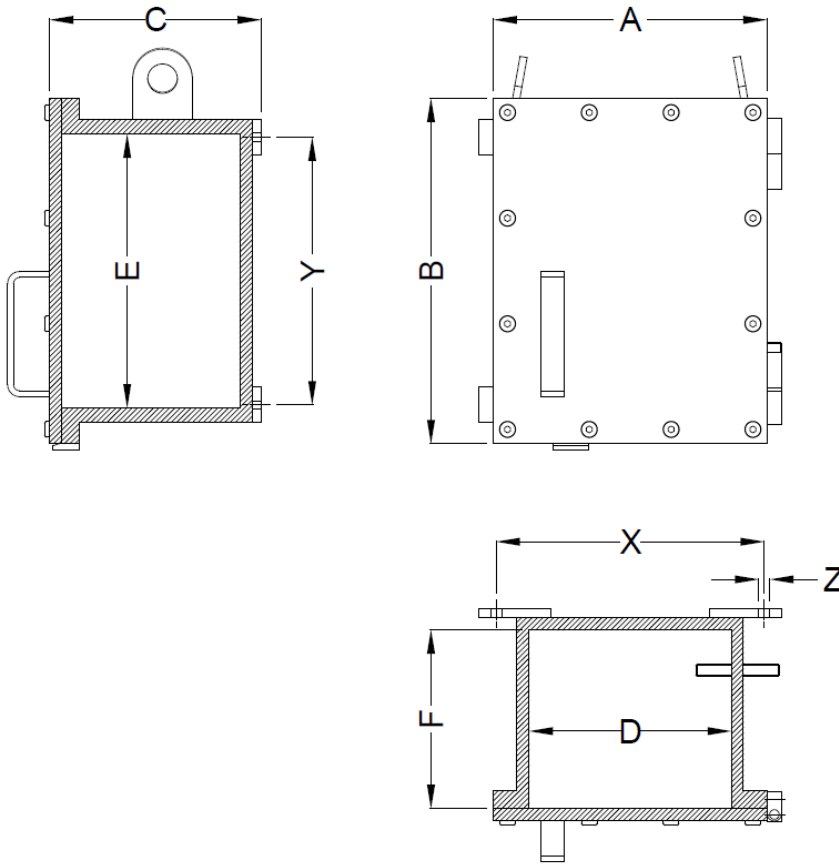
| | |
|----------------------|--|
| Apparatus Type | Submersible terminal enclosure |
| Ingress Protection | IP68 to EN60529 100m for 5 days 50m for 14 days |
| Material | 316 Stainless Steel enclosure, lifting eyes, hinges and fixings |
| Components | Ex e certified terminals |
| Voltage Rating | As per terminal |
| Cable Entry | Variable entry combinations on any of the 4 sides |
| Mounting | Via rear mounting lugs (see dimensional data overleaf) |
| Certification | |
| Area Classification | Group IIC Category 2 GD (Zone 1/21 and 2/22) |
| Type of Protection | Ex e (Increased Safety), Ex ia, Ex ib (Intrinsically Safe), Ex ta, Ex tb (Dust) |
| Apparatus Coding | Ex e IIC T5 Gb, Ex tb IIIC T100°C Db, Ex ib IIC T5 Gb, Ex tb IIIC T100°C Db, Ex ia IIC T5 Ga, Ex ta IIIC T100°C Da |
| Ambient Temperature | -50°C to +55°C |
| Certificate Number | CML 14ATEX3021X, IECEx CML 14.0008X |

Options

| | |
|---------|----------------------------------|
| RALXXXX | Paint Finish (any RAL colour) |
| SSMP | Mounting Plate (Stainless Steel) |

Add the required suffix to the product reference, for example NAUT4RAL7001

Enclosure Dimensions & Ratings



| Nautilus Model | EXTERNAL Dimensions (mm) | | | INTERNAL Dimensions (mm) | | | FIXING Dimensions (mm) | | | Weight (kg) | Max Power Dissipation (W) | |
|----------------|--------------------------|------|-----|--------------------------|------|-----|------------------------|-----|------|-------------|---------------------------|------|
| | A | B | C | D | E | F | X | Y | Z | | Ga,Gb,Db | Da |
| NAUT1 | 174 | 204 | 109 | 100 | 130 | 80 | 160 | 114 | 11 | 11 | 9.3 | 4.65 |
| NAUT2 | 244 | 304 | 172 | 170 | 230 | 150 | 230 | 154 | 12.5 | 29 | 19 | 9.5 |
| NAUT3 | 244 | 414 | 172 | 170 | 340 | 150 | 235 | 264 | 12.5 | 38 | 22 | 11 |
| NAUT3A | 294 | 414 | 172 | 220 | 340 | 150 | 289 | 264 | 12.5 | 44 | 29 | 14.5 |
| NAUT4 | 284 | 474 | 222 | 210 | 400 | 190 | 291 | 324 | 12.5 | 53 | 32 | 16 |
| NAUT5 | 324 | 424 | 222 | 250 | 350 | 190 | 327 | 274 | 12.5 | 54 | 32 | 16 |
| NAUT6 | 390 | 470 | 233 | 310 | 390 | 190 | 393 | 320 | 12.5 | 86 | 36 | 18 |
| NAUT7A | 350 | 610 | 255 | 270 | 530 | 210 | 353 | 460 | 12.5 | 103 | 42 | 21 |
| NAUT7B | 450 | 510 | 255 | 370 | 430 | 210 | 453 | 360 | 12.5 | 108 | 42 | 21 |
| NAUT8 | 480 | 570 | 255 | 400 | 490 | 210 | 483 | 420 | 12.5 | 124 | 44 | 22 |
| NAUT9 | 330 | 710 | 255 | 250 | 630 | 210 | 423 | 560 | 12.5 | 113 | 44 | 22 |
| NAUT10 | 420 | 770 | 295 | 340 | 690 | 250 | 423 | 620 | 12.5 | 155 | 50 | 25 |
| NAUT11 | 630 | 1100 | 440 | 570 | 1020 | 390 | 655 | 960 | 17 | 440 | 68 | 34 |

Other sizes available on request.