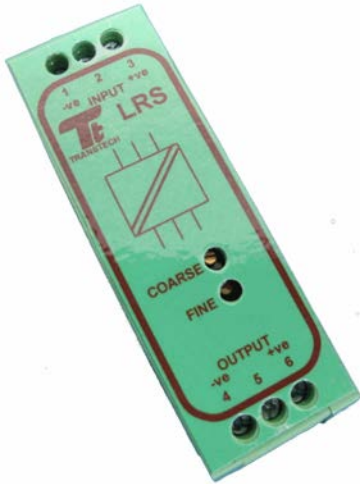


MODEL:- LRS

Loop Repeater 1Ch 4-20mA.



GENERAL DESCRIPTION

The LRS is a fully floating 4-20mA signal isolator that provides up to 2500Vrms isolation between the input loop and the output loop. The LRS can be used as a noise filter or reducer of common mode noise in some 4-20mA current loops. The LRS is manually adjustable to suit the individual loop loading, the adjustments being done from the top of the module via multi-turn potentiometers.

The LRS is factory calibrated for a 250 ohm output load unless otherwise specified.

FEATURES

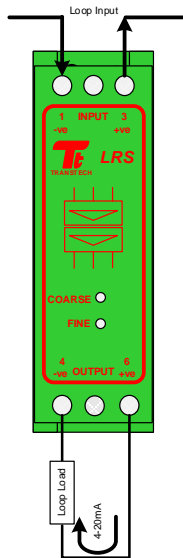
- ◆ Full galvanic isolation input and output
- ◆ Both DIN and G rail mounting
- ◆ External Monitor points (40-200mV)
- ◆ External adjustment points
- ◆ Very small footprint of 25mm width

TECHNICAL DATA

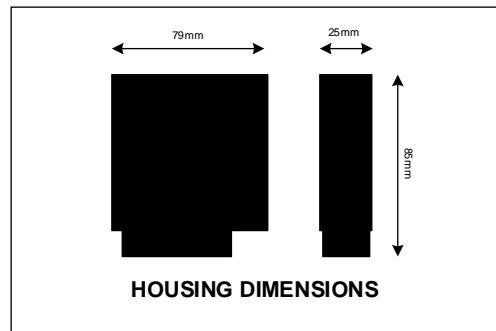
Loop Voltage	Between 12 and 45Vdc
Input	4 to 20mA
Output	4 to 20mA
Loop Resistance	250 ohms maximum per loop
ESD Protection	Nominally 15kV (all ports) (IEC 61000-4-2)
Four Port Isolation	1500V (galvanic, all ports)
Power Indicator	Blue LED

GENERAL SPECIFICATION

Loop Voltage	12 to 45Vdc
Loop Resistance	Load plus 250 ohms maximum.
Long term drift	<0.1% of span per 10,000hrs
Isolation Level	1500V (galvanic, all ports)
Creepage distance	≥2.0mm. (Port to Port)
Output Noise Level	3.2µA rms (typical).
Accuracy	0.1% of span
Linearity	0.1% of span
Repeatability	0.1% over 10,000hrs
CMR (50/60Hz)	Typically 110dB
Response time	Nominally 100mS (10 to 90%)
Operating Temp	-25 to 75 Deg. C
Storage Temp	-55 to 85 Deg. C
Terminals	Self Opening 2.5mm ²
Housing Material	KRILEN
Dimensions	79mm x 85mm x 25mm (see profile)
Weight	90 grams



SCHEMATIC DIAGRAM



HOUSING DIMENSIONS