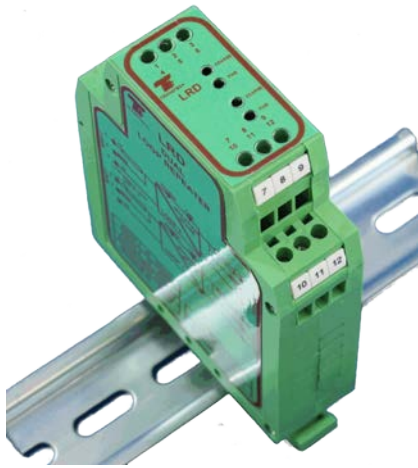


## MODEL:- LRD

Loop Repeater 2 Ch. 4-20mA



### GENERAL DESCRIPTION

The LRD is a fully floating 2 channel 4-20mA signal isolator that provides up to 2500Vrms isolation between the input loop and the output loop. The LRD can be used as a noise filter or reducer of common mode noise in some 4-20mA current loops. The LRD's input can be linked to give a single input with dual isolated outputs and it is manually adjustable to suit the individual loop loading, the adjustments being done from the top of the module via multi-turn potentiometers.

The LRD is factory calibrated for a 250 ohm output load unless otherwise specified.

### TECHNICAL DATA

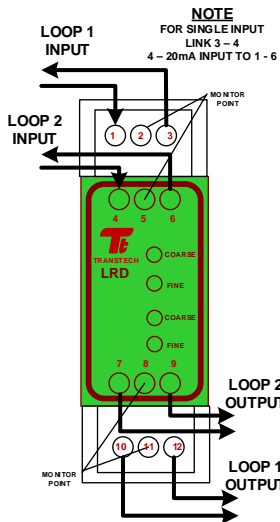
<b>Loop Voltage</b>	Between 12 and 45Vdc)
<b>Five Port Isolation</b>	2500V nominal
<b>Input Range 2 channel</b>	0(4) to 20mA
<b>Optional Single Input</b>	Link terminals 1 & 5
<b>Output Range 2 channel</b>	0(4) to 20mA
<b>Loop Resistance</b>	1200 ohms/loop maximum
<b>ESD Protection</b>	Nominally 15kV (all ports) (IEC 61000-4-2)
<b>Power Indicator</b>	Blue LED

### GENERAL SPECIFICATION

Supply Voltage	12 to 45Vdc
Loop Resistance	Load plus 250 ohms
Long term drift	< 0.1% of span per 10,000hrs
Isolation Level	2500V d.c.
Creepage distance	≥2.5mm. (port to port)
Output Noise	3.2µA r.m.s. (typical).
Accuracy	0.1% of span
Linearity	0.1% of span
Repeatability	0.1% over 10,000hrs
CMR (50/60Hz)	Typically 110dB
Response time (to 1% )	Nominally 100mS (10 to 90%)
Operating Temp	-25 to 75 Deg. C
Storage Temp	-55 to 85 Deg. C
Terminals	Self Opening 2.5mm <sup>2</sup>
Housing Material	KRILEN
Dimensions	79mm X 106mm X 25mm
Weight	135 grams

### FEATURES

- ◆ Full galvanic isolation input and output
- ◆ Both DIN and G rail mounting
- ◆ External Monitor points (40-200mV)
- ◆ External adjustment points
- ◆ Very Small footprint of 25mm width
- ◆ Internal monitoring resistors are all 0.1%



CONNECTION DIAGRAM

