

ABTECH

Enclosure Solutions

Terminal Boxes

Electrical Enclosures

Hazardous Area Enclosures

Special Purposes Enclosures

NOW IECEX Certified range available



A.B Controls and Technology

Available in Australia from www.svbextech.com.au and www.transstech.com.au

Major Projects Worldwide

Abu Dhabi	ADNOC 545 Project, ADNOC Bab-Maqta-Taweelah, Gas Pipeline Project, Adma Opca MODICS project
Algeria	Sonatrach Project
Azerbaijan	Azeri, ACG
Brunei	Shell
Canada	Hibernia, Sable, Sable 2, Terra Nova, White Rose, Alma
China	Bohai Oil Phase 1 & 2, Panyu
Dubai	Dugas
India	ONGC ICP Project, ONGC ICW Project
Indonesia	Marathon Oil Kakap Project Line, Belanak
Iran	Khorasan Project
Malaysia	KVCM Project, ANGSI 'A', ANGSI 'B', St. Georges Compression
Nigeria	East Area Project
Qatar	North Field Development Project, RasGas
Russia	Sakhalin I & II
Saudi Arabia	Aramco GOSP 4
Singapore	ACT-OG-32 Project, Scherring Plough, Total Bongkot Field Development Project
Taiwan	FPC Upgrade
Thailand	Thai Petroleum – Thapp
U.A.E	Zadco

Major Project Customers

AGIP	Tiffany
Amerada Hess	Rob Roy, Ivanhoe, Scott, Triton
Britoil / BP	Beatrice, Thistle, Clyde
British Gas	Morecambe Bay, Phases 1 & 2, Morecambe Bay Onshore Roughs Project, Armada
BP	ULA (Norway), South East Forties, Wytch Farm, Miller Bruce, Andrew, Cleeton, Azeri, Clair, Thunderhorse, Plutonio
Chevron	Alba
Conoco	Murchison, Hutton, Heidrun, Complete Southern Basin Development, Caister/Murdoch Development, Belanak
Encana	Buzzard
ESSO	Goldeneye
ExxonMobil	Kizomba
Hamilton	Esmund, Duncan, Ravenspurn North, Liverpool Bay
Mobil	Beryl 'B', Beryl 'A' Refit
Norsk Hydro	Oseberg 2
Occidental	Claymore, Piper 'B', Saltire
Shell	Tern, Eider, Sole Pit, Kittiwake, Gannet, Galleon, Pelican Captain, Bonga
TengizChevrOil	West Azeri
Total	North Alwyn 'A' and 'B', St Fergus Terminal

Major Projects UK

Alternative Landing Ship Logistic Vessels
Birmingham Northern Relief Road
Blackwall Tunnel
BP Amoco - E.T.A.C, V.A.M plants
Channel Tunnel
Saltash Tunnel
Type 45 Frigate

ABTECH Worldwide Locations and Local Support



NOW IECEx Certified range available

 **A.B Controls and Technology Limited**

Sanderson Street
Lower Don Valley
Sheffield
South Yorkshire
S9 2UA

Tel: +44 (0) 114 244 2424
Fax: +44 (0) 114 243 4312
Email: sales@ab-tech.co.uk
Web: www.ab-tech.co.uk



 **A.B Controls and Technology Inc.**

1813 Rotary Drive
Humble
Texas
USA
TX77338

Tel: +001 281 5483424
Fax: +001 281 5483624
Email: sales@abtech-inc.net
Web: www.abtech-inc.net



 **Abtech GmbH**

Dünner Kirchweg 11
32257
Bünde
Germany

Tel: +49 (0) 522 375016
Fax: +49 (0) 522 375019
Email: sales@abtech.de
Web: www.abtech.de



 **Abtech Nederland B.V**

Noordenweg 24c
2984 AG Ridderkerk, Postbus 4090
2980 GB Ridderkerk
Nederland

Tel: +31 (0) 180 428417
Fax: +31 (0) 180 431668
Email: sales@abtech.nl
Web: www.abtech.nl



Since the first ABTECH sheet steel enclosure was manufactured in the 1970's the company has never lost sight of it's goal, to become a leading supplier of quality electrical enclosures and junction boxes suitable for both industrial and hazardous area markets. This we believe has been achieved through innovation, market leading design, rigorous testing and adherence to quality.



In recent years ABTECH have extended their range of enclosures to cope with ever increasing customer demands for unique solutions to their problems. These solutions include high current connection boxes (up to 3000Amps), high temperature junction boxes (up to 950°C for 3 hours) and IP68 enclosures (up to 120ft depth).

ABTECH rose to the challenge when the Channel Tunnel was being constructed and produced over 12,500 junction boxes and emergency lighting actuators to the most exacting of standards.

With the emphasis on reliability and safety, ABTECH designed a solution that more than met the rigorous specification laid down by Eurotunnel.

The new millennium has seen ABTECH once more expanding their range of products and services to help their customers cope with the need to meet ever changing international standards. The entire hazardous area product range of BPG, SX and ZAG enclosures now complies with the ATEX legislation and is certified EEx'e' Group II Zone 1 and Zone 2 areas.



ABTECH operate in the global market place as the nature of the Oil & Gas & Petrochemical industry demands and to meet this requirement ABTECH operate at an International level. With the headquarters based in Sheffield, England and factories and offices in Houston, Texas, Bünde, Germany and a network of agents covering over 40 countries worldwide, ABTECH have the coverage to manage any project. Indeed over the last 25 years, ABTECH have been involved in many projects throughout the world. Please refer to our Major Projects List on the inside front cover of this catalogue.



ABTECH also manufacture restricted breathing enclosures (EEx'nR') which are capable of housing sparking and hot components and are suitable for use in Zone 2 areas and can often be a cost effective alternative to flameproof enclosures (EEx'd').

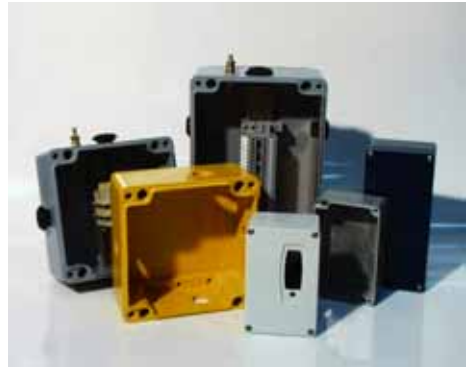
The durability of our products is measured in decades. Whether the product is for an industrial or hazardous area application, ABTECH place the utmost importance on quality as would be expected from a leading manufacturer. The success of the company has been built on this dedication to total quality control and with over 30 years history of supply to the leading oil & gas companies throughout the world it is a policy that has been proven to work.

With approvals such as BS EN ISO 9001:2000, certification to British, European and International standards and approvals from certifying authorities in the UK, USA, Canada and Russia, the company's commitment to quality ensures that safety is never compromised.



Technical support at ABTECH begins long before the order is placed. Our dedicated sales staff based at our regional offices can offer advice on enclosure type, terminal selection, cable entry placement and any other requirements that might dictate the eventual selection. Technical assistance is also available at any time during the order process or indeed after the equipment is installed and ABTECH staff will be only too happy to help with any questions you may have.

The ABTECH range of products are suitable for both industrial and hazardous area applications.



Enclosures manufactured in stainless steel, mild steel, glass reinforced polyester, aluminum, polycarbonate and ABS are suitable for a wide range of industrial and OEM applications and we have the facilities to modify the standard enclosure to meet the customer's requirements.

ABTECH

These services include machining, painting, silk screen printing and electro-polishing. We are also able to mould any of the plastic range of enclosures in a wide range of colours (subject to minimum order quantity).

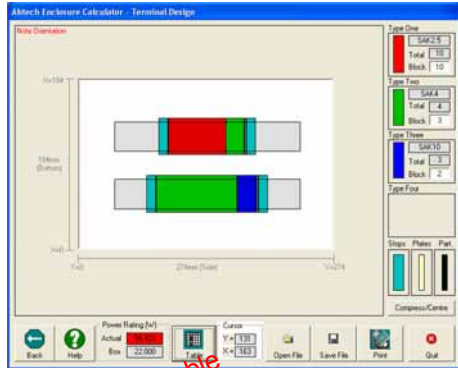


ABTECH Enclosure Calculator

One of the most difficult and time consuming steps in the selection of a suitable enclosure to meet your particular requirements is trying to calculate if the size chosen will accommodate the terminals and cable entries you require. At ABTECH we have, for many years, been using our Enclosure Calculation software which was designed specifically for use with our enclosures.

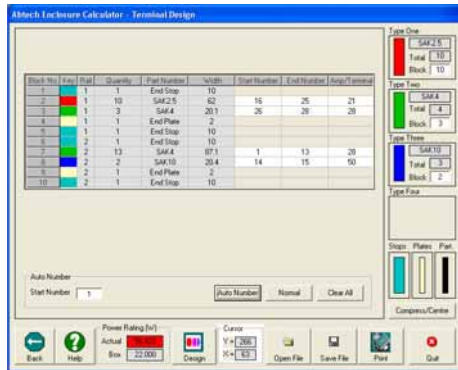
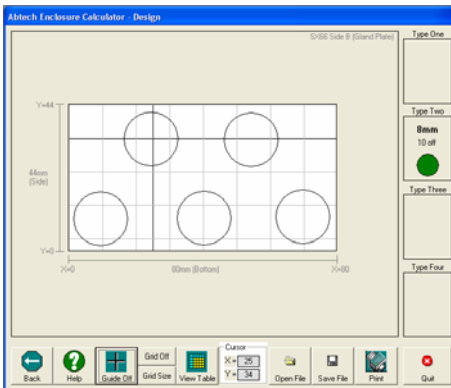


The latest version also incorporates a terminal calculation program which lets you see at a glance whether or not the desired number of terminals can be accommodated within your chosen enclosure and as with the Entry Calculator will print a drawing of your finished design.



For users of hazardous area equipment the terminal calculator will also calculate the power dissipation of the proposed arrangement to ensure compliance with the certification of the enclosure.

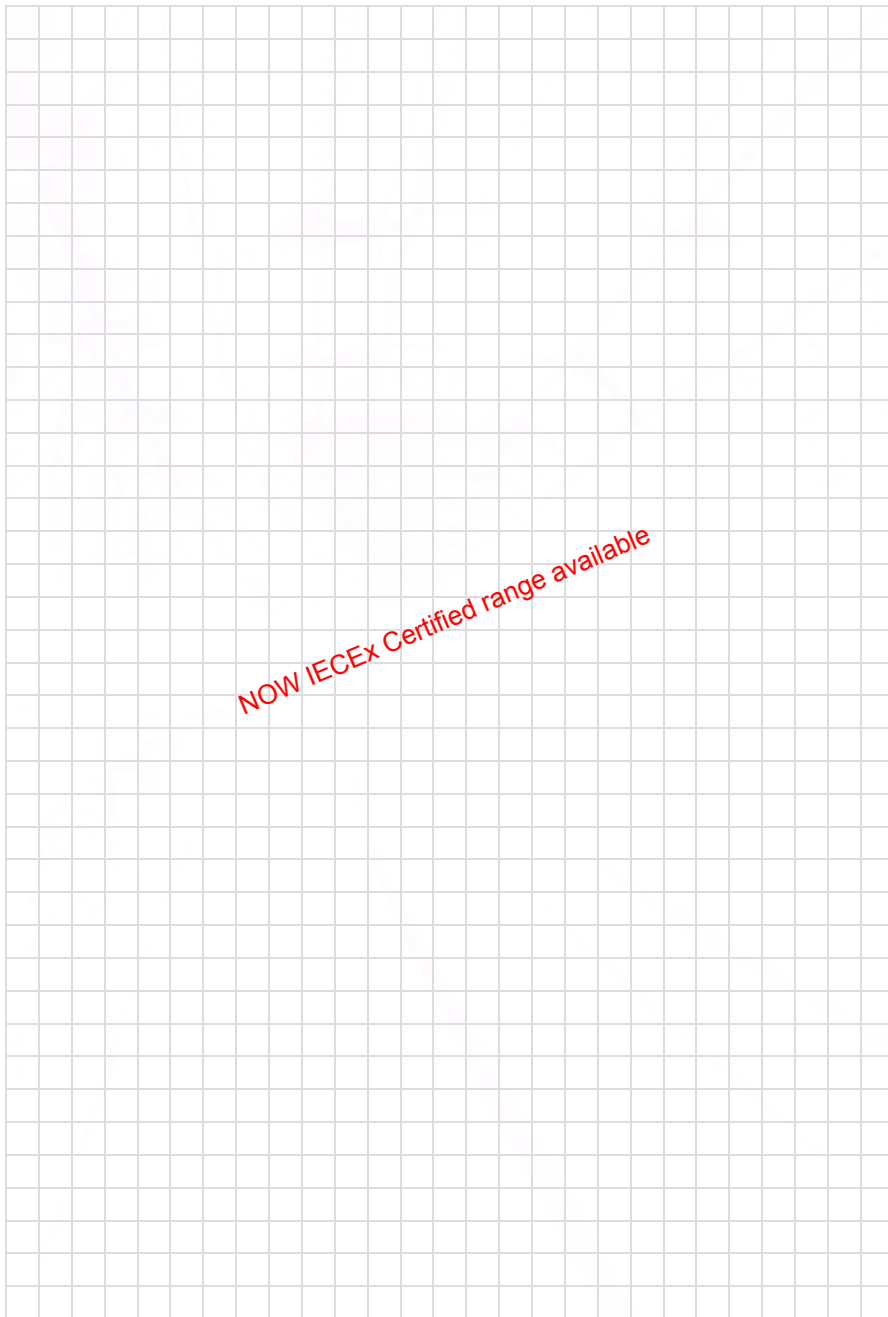
Some years ago we decided to make this program available to all our customers, free of charge, and this has been a tremendous success. The software allows users to easily design complex arrangements of entries and generates a drawing which ABTECH can subsequently use for manufacturing purposes.



The program can be used on any Windows based PC and is simple to install and use. It includes a comprehensive help menu to allow users to start using the software immediately without the need of expert tuition. The ABTECH Enclosure Calculator CD can be obtained by contacting our sales desk or for immediate download from our websites at www.ab-tech.co.uk or www.abtech-inc.net

<p>Stainless Steel and Mild Steel Enclosures</p> <p>SX Range</p>		<p>SX Range</p> <p>1</p>
<p>Glass Reinforced Polyester Enclosures</p> <p>BPG Range</p>		<p>BPG Range</p> <p>2</p>
<p>Assembled GRP Junction Boxes</p> <p>BPGA Range</p>		<p>BPGA Range</p> <p>3</p>
<p>Die-Cast Aluminium Enclosures</p> <p>ZAG Range</p>		<p>ZAG Range</p> <p>4</p>
<p>High Voltage Enclosures</p> <p>MJB, DPJB, HVJB LR and BusBar Ranges</p>		<p>High Voltage</p> <p>5</p>
<p>Fire Rated Enclosures</p> <p>SX and BPG Range</p>		<p>Fire Rated</p> <p>6</p>
<p>Polycarbonate and ABS Enclosures</p> <p>ZP Range</p>		<p>ZP Range</p> <p>7</p>
<p>Special Purpose Enclosures</p> <p>GRN Range and Submersible Enclosures</p>		<p>Specials</p> <p>8</p>
<p>Technical Information</p> <p>Selection, Design and Certification Information</p>		<p>Technical</p> <p>9</p>

NOW IECEx Certified range available



1

SX

Stainless Steel and Mild Steel Enclosures

NOW IECEX Certified range available

SX Range

1

BPG Range

2

BPCA Range

3

ZAG Range

4

High Voltage

5

Fire Rated

6

ZP Range

7

Specials

8

Technical

9

Stainless Steel and Mild Steel Enclosures

1

SX Range

The SX range comprises 14 sizes of enclosure manufactured in either mild steel or stainless steel. 11 sizes are available in depths of 140 or 200mm and 8 sizes are available in depths of 140, 200 or 300mm. The majority of the range can be fitted with removable gland plates on any or all of the four sides. The mild steel version (MSX) is available with a number of paint options (most RAL colours are available) and anti-corrosion finishes. Further advice on surface finishes can be sought from the ABTECH sales office.



Now IECEx Certified range available

The stainless steel range (SSX) is manufactured in 316 grade stainless steel to give the maximum environmental protection. The main body is manufactured from 2mm thick sheet and the mounting straps and gland plates from 3mm thick plate. Cable entries can be drilled in the enclosure door or sides or through the gland plates, if fitted. Entries may also be drilled through the rear face of the enclosure (EEx'e' versions also.)

Another important feature of the SX range is the hinged, lift-off door, which is held to the enclosure by at least 4 captive stainless steel screws, which also maintain the correct compression on the gasket. The hinges are solid block, machined oversize to enable the screws to control the closing of the door, not the hinge, its only function being to support the door when opened. The hinges allow easy removal of the door with only minimal opening required before removal (less than 10°).

Earthing is accomplished by means of an Internal / external earth stud fitted as standard which can be connected to the terminal mounting rail or component mounting plate. Optionally, earth studs can be fitted to the door and gland plates. Rail mounted earth terminals or proprietary earth bars can be fitted inside the enclosure and ABTECH Sales staff will be happy to advise on this. When fitted with a standard neoprene gasket, the enclosure is suitable for ambient temperatures of - 40°C to + 80°C (-40°F to +176°F). Alternatively, when fitted with an optional silicone gasket the temperature range is increased to - 70°C to + 130°C (-94°F to +266°F).

The SX range of enclosures are suitable for use in hazardous areas and can be supplied with a number of certificates. ATEX EEx'e' to BS EN 50019 (Zone 1 & 2) EEx'nA' to BS EN50021 (Zone 2) and NEMA 4X (CSA, UL & FM class 1, 2) and GOST.



The SX range can be supplied fitted with any component approved terminal to apparatus level or can be supplied empty as component approved for the clients own certification requirements.